



International Medical Corps

1919 Santa Monica Blvd.
Suite 400
Santa Monica, CA 90404
Tel: +1.310.826.7800
Fax: +1.310.442.6622
www.imcworldwide.org

Final Report to: Jewish World Watch

Submission Date: October 30, 2009

Project Title: Opal Green King Maternity Ward Rehabilitation

Project Location: Sam Ouandja, Central African Republic

Project Goal: To improve maternal and child health among Darfur refugees and the host population in Sam Ouandja

Project Duration: November 15, 2008 – May 15, 2009

Grant Amount: \$10,000

Contact: Stacey Freeman
Director, Resource Development
International Medical Corps
1919 Santa Monica Blvd., Suite 400
Santa Monica, CA 90404
(310) 826-7800
sfreeman@imcworldwide.org

I. BACKGROUND

In November 2006 and March 2007, the local population in Sam Ouandja, Haute-Kotto Province, northeastern Central African Republic, was forced to flee their homes as a result of rebel attacks in their community. Then, in May 2007, more than 3,000 refugees from Darfur fled attacks in Dafiq town in South Darfur, and sought refuge in Sam Ouandja. As the local population began returning to Sam Ouandja, it became apparent that they would be unable to support the influx of refugees into their community. In response to the lack of access to health care for both Darfuri refugees and the local host population in Sam Ouandja, International Medical Corps sent out its first mobile medical unit from Ouadda Djalle in July 2007 to assess the situation.

International Medical Corps has been providing medicine and medical supplies for local health facilities in Sam Ouandja. IMC also trained the local health care staff – drawn from the host and refugee community – to provide basic health care and set up a basic surgical unit in Sam Ouandja health center to fill the gap in referral services in the area. In addition, IMC established a small health post in Sam Ouandja refugee camp to provide triage, basic consultations, ante and postnatal consultations and nutritional screening. More serious cases are sent to the health centre.



The maternity ward prior to rehabilitation

Women and children are the most vulnerable members of both the refugee and host populations in Sam Ouandja. Nearly 40% of the deliveries in the area were prolonged labor or complicated deliveries, where the closest functional hospital is approximately 90 miles away. The Sam Ouandja health center, including the maternity ward, was damaged during the attacks and was unable to provide maternal and child health services for pregnancies and deliveries.

II. GOALS AND OBJECTIVES

Goal: To improve maternal and child health among Darfuri refugees and the host population in Sam Ouandja.

Objective: To increase access to quality maternal and child health services for Darfur refugees and host population in Sam Ouandja through rehabilitation of the maternity ward.

III. PROGRAM ACCOMPLISHMENTS

International Medical Corps assessed the maternity ward during the initial stage of the project. Due to the state of the maternity ward, the original structure had to be completely torn down and rebuilt. IMC commissioned blueprints for the rebuilt structure (please see the Appendix) and commenced construction during the early part of 2009. Costs of construction materials proved to be greater than those originally budgeted for the project. However, these were offset by the decision of the local community members to contribute to the construction of the maternity ward by supplying labor to support the project. Other funders have also contributed to the project, including equipment from GE and medicines supplied by the US State Department's Bureau of Population, Refugees and Migration.



Interim stage of construction of the maternity ward

Maternal and child health care services were supplied at the adjoining clinic during construction of the maternity ward. The clinic also provides primary health care, pre-natal care, expanded program of immunization, insecticide treated net distribution, and vitamin A distribution. International Medical Corps began providing maternal and child health care services upon completion of the maternity ward in mid-2009. The Opal Green King Maternity Ward has two hospitalization rooms, two consultation rooms, one delivery room, and a pharmacy.



An expectant mother receives pre-natal care at the Opal Green King Maternity Ward

The Opal Green King Maternity Ward is staffed by an International Medical Corps doctor and midwife, and operates with the support and involvement of the Ministry of Health. The ward provides pre-natal care, deliveries, and post-natal care to both mothers and newborn children, including basic guidance for breastfeeding and basic monitoring of the child's condition on follow-up visits. The maternity ward and clinic currently serve 3,224 refugees from Darfur and approximately 10,000 members of the host population in CAR.



An International Medical Corps midwife monitors the condition of an infant at the maternity ward

IV. CONCLUSION


Through the generosity of Jewish World Watch, International Medical Corps has rebuilt the Opal Green King Maternity Ward and increased access to maternal and child health services for the refugees and host population residing in Sam Ouandja in the Central African Republic. On behalf of our program participants, volunteers and staff, thank you. We look forward to continuing our partnership in the coming year.

V. FINANCIAL STATEMENT

Program Costs		
Construction equipment and materials	\$4.380	\$7.969,71
Labor costs	\$1.220	\$30,29
Delivery room equipment and materials	\$2.400	\$0,00
Country and Field Office costs	\$696	\$696
Total Direct Costs	\$8.696	\$8.696
Indirect costs (15%)	<u>\$1.304</u>	<u>\$1.304</u>
Total budget	\$10.000	\$10.000

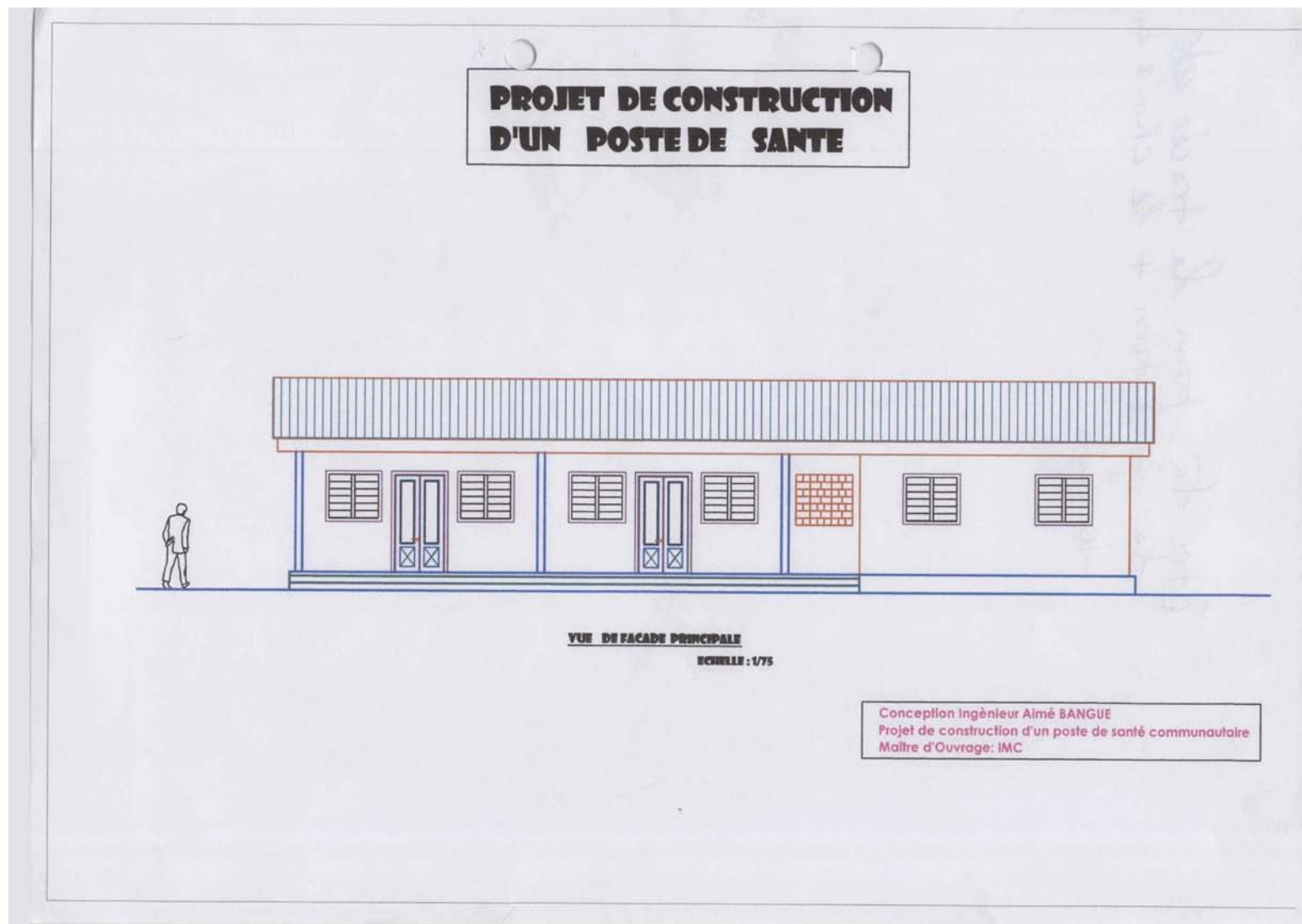
"I certify to the best of my knowledge and belief that this report is correct and complete and that all amounts detailed have been actually and necessarily expended for the purposes set forth in the award documents"

Printed or Typed Name and Title: Kristina Crnjac, Regional Finance Coordinator

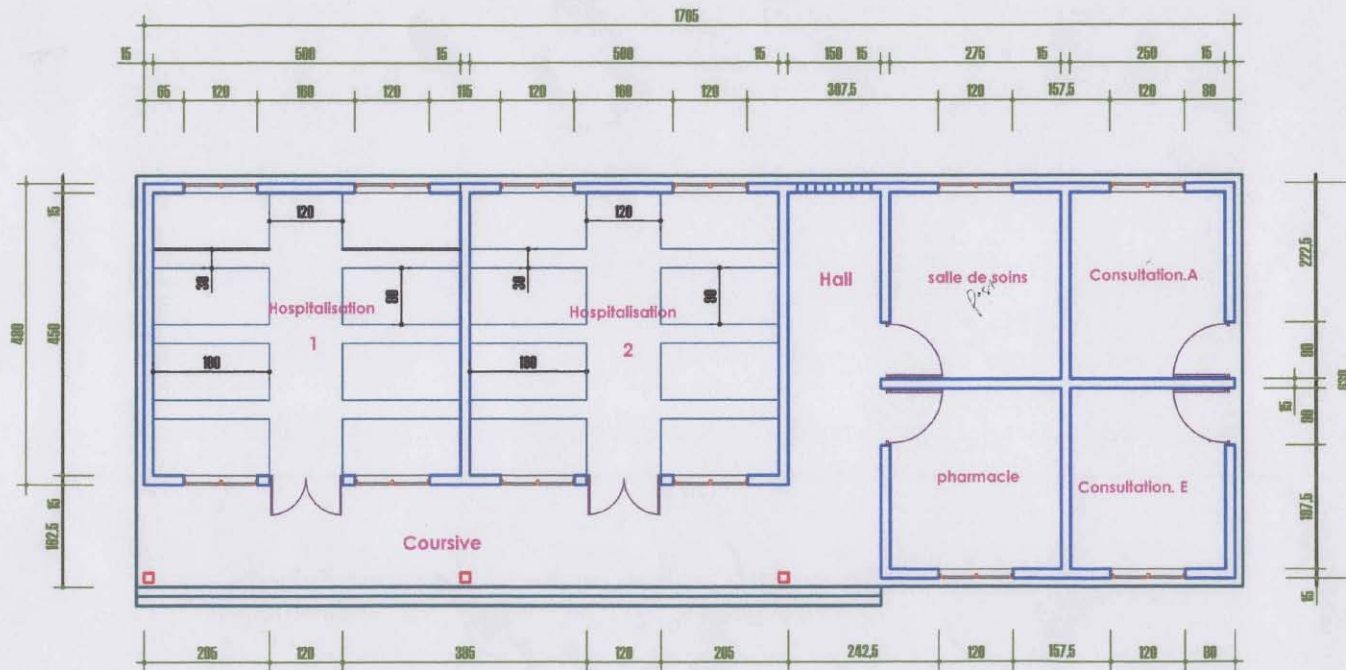
Signature: 

Date 08/28/2009

VI. APPENDIX



PROJET DE CONSTRUCTION D'UN POSTE DE SANTE



VUE EN PLAN
ECHELLE : 1/75

Conception Ingénieur Aimé BANGUE
Projet de construction d'un poste de santé communautaire
Maître d'Ouvrage: IMC